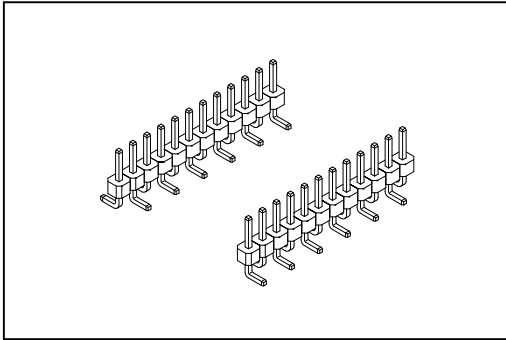


2115 Series

Pin Header 2.0mm(0.079")



Material:

Housing: High Temperature Plastic UL94V-0. withstands IR and VPR soldering methods.

Contacts: Brass.

Electrical Characteristics:

Current Rating: 1 A.

Dielectric Withstanding Voltage: AC 500V.

Insulator Resistance: 1000MΩ min.

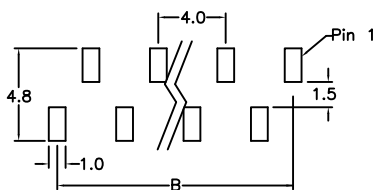
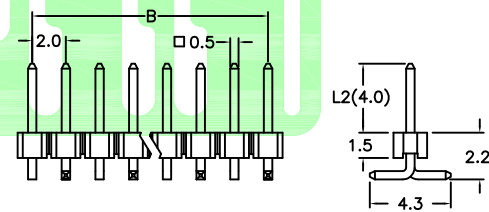
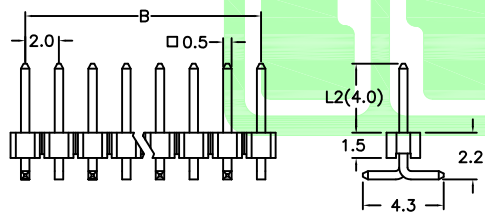
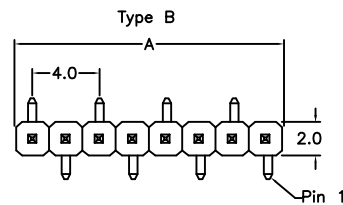
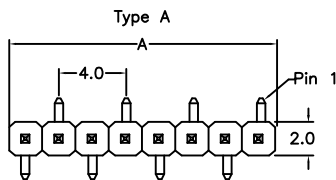
Contact Resistance: 20mΩ max.

Operating Temperature: -40°C~+105°C.

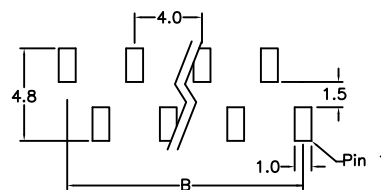
Features:

- * Single row Surface Mount
- * Low profile insulator 1.50mm(0.059").
- * Two choices of foot print.
- * Custom design provides wide product flexibility.

Mates with: 2106,2141,2143,2145.



P.C. Board Layout



P.C. Board Layout

Position Dimension	2 Thru 40
A	2.0 X No. of Positions
B	2.0 X No. of Positions -2.0

Ordering information

2115- 1 X 40 G 00 D A /L2 U
 Series Single Row No. of Pin Per Row G: Gold Plated T: Tin Plated
 00: G/F D: SMD Type A /L2 Foot Print Type A & B
 U: Tube Package

Custom Design: S.M.D. (i.e. 2115-1 X 40 G 00 D A/L2)
 L2: Mating length